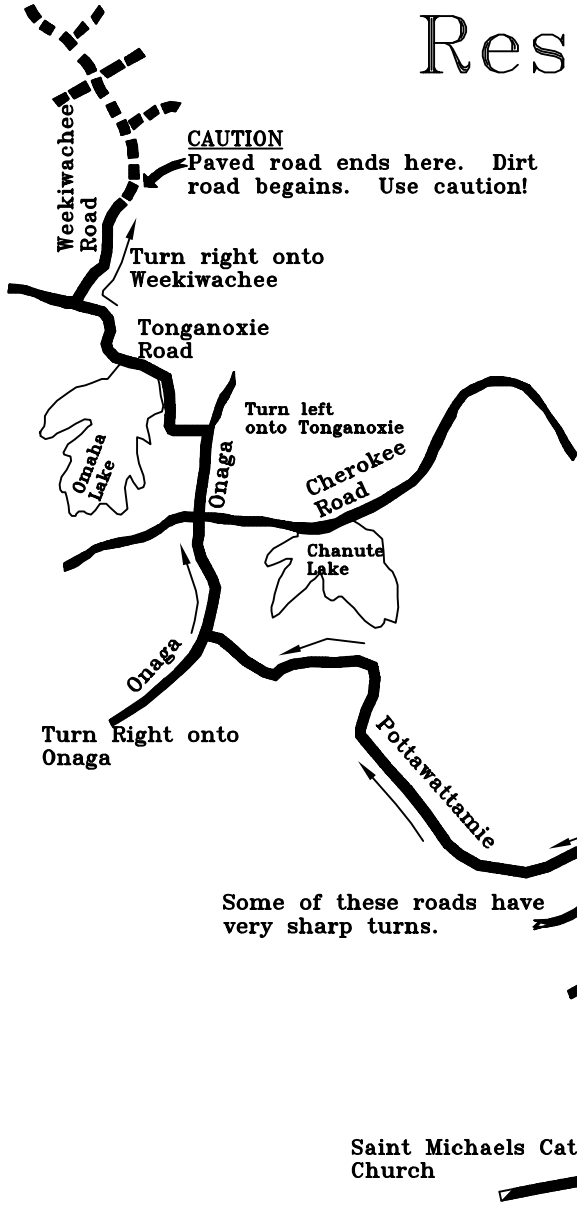


# Hardy Arkansas to Kia Kima Scout Reservation

Kia Kima Scout Reservation



**CAUTION**  
Paved road ends here. Dirt road begins. Use caution!

Turn right onto Weekiwachee

Tonganoxie Road

Turn left onto Tonganoxie

Cherokee Road

Chanute Lake

Onaga

Turn Right onto Onaga

Pottawattamie

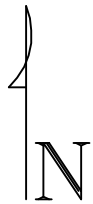
Some of these roads have very sharp turns.

Immediately after passing through Hardy on Route 63 turn left onto Route 62 and cross over the Spring River. Continue on Route 62 passing Signs to Cherokee Village at the top of the hill. Continue through Highland and look for Saint Michaels Church, on your right. Turn right at Saint Michaels.

Saint Michaels Catholic Church

To Hardy, AR

62 To Highland



BOY SCOUTS OF AMERICA  
CHICKASAW COUNCIL  
Hardy, AR. to Kia Kima Scout Reservation